



# Uniting Waverley Estate.

**Preserving and celebrating our heritage.**

**Uniting War Memorial Hospital at Waverley contains several heritage features that are valued by Uniting and the local community.**

The heritage buildings at Uniting War Memorial Hospital are in excellent condition and have been maintained respectfully for over 100 years. Uniting is passionate about celebrating and continuing the history of the site, by honouring the Vickery family's significant legacy.

Unfortunately, many of the services which are offered on the site have been provided in 40-50 year old buildings which no longer meet contemporary service expectations and require renewal to continue these services. When considering its redevelopment, Uniting confirmed its strong commitment to the protection and enhancement of its heritage and legacy of service.

**Uniting is committed to conservation** of the heritage landscape spaces and buildings, **including the main Edina building**, which will be retained under the concept master plan proposed.

Call us on **1800 864 846**  
Or visit **[uniting.org/waverley](https://uniting.org/waverley)**

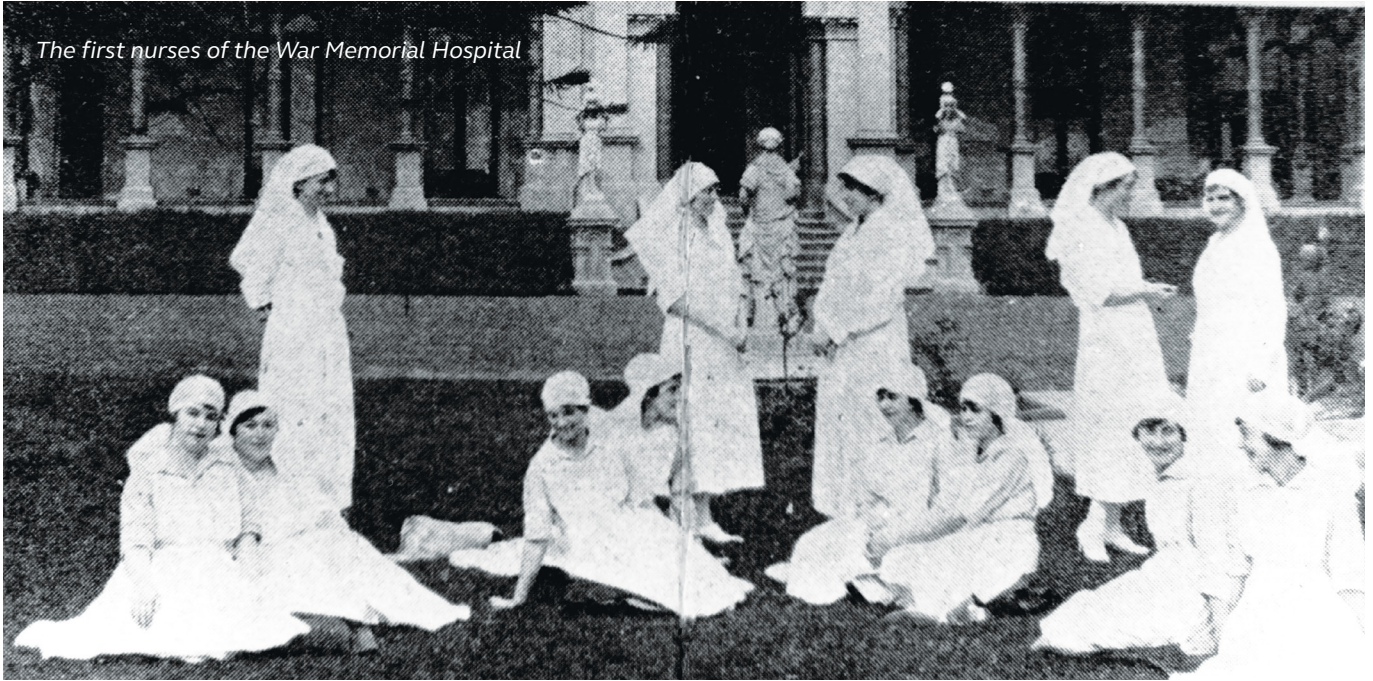


**Our vision is to continue to support the Waverley community by providing quality, person-centred aged care and community services, that respond to people's changing needs.**

Our services will promote health, wellbeing and connection, in welcoming settings that conserve and respect Uniting Waverley's rich history.

**Uniting**

*The first nurses of the War Memorial Hospital*



## The rich history of heritage

Uniting is committed to creating special places, with community interests at heart. Our concept master plan considers the balance between the creation of open space with service provision, accommodation and health outcomes, and quality community services. It seamlessly integrates both within the existing rich heritage of the site location and buildings.

Uniting is proud to be part of the continuing legacy of service within the community; an offer to our community that began on 25 April 1919 when the Vickery family of Waverley gifted their home 'Edina' to the Methodist Church to build a repatriation hospital.

This gift, along with the sale of additional land around the Estate, was finalised in 1922. We are proud to celebrate the centenary later this year.

A timeline of key historical facts and photos was unveiled on site in May 2019, to recognise Uniting's continued care for community, place and service at the Waverley Estate.

As Uniting brings the original Estate together again, we hope to celebrate this reunification with the community.

**“[Giving the estate to the church] met a need for the community, it met a need for the family and for the church. It was a highly worthwhile cause.”**

Michael Waterhouse,  
Vickery descendant and author

**Uniting is committed to keeping the local community informed about the treatment of these heritage-rich assets throughout the project.**

Are you interested in the heritage of our Waverley Estate? We encourage you to register for updates at [uniting.org/waverley](https://uniting.org/waverley), and we'll keep you informed of the opportunity to have your say.

The Waverley Estate today



**We greatly value the heritage of Uniting Waverley and recognise the great service it provides to the local community.**

The War Memorial Hospital is an important building within the Waverley Estate that Uniting is committed to preserving. Uniting is exploring the potential expansion of the hospital's services, but right now our focus is on improving and redeveloping the areas and buildings around the Hospital.

### Managing site heritage

Heritage is at the heart of Uniting's redevelopment. The master planning process commenced by commissioning a detailed Conservation Management Plan (CMP) from a renowned heritage architect. The CMP considered the history of the site from when it was a family-owned Estate, through to today.

It was then possible to determine where developable portions of the site may lie, informing the concept master plan that evolved from this deep connection and respect for heritage. The concept master plan has also been reviewed by Waverley Council's heritage team and Heritage NSW.

In July 2021, Heritage NSW wrote to Waverley Council acknowledging that the revised planning proposal and concept master plan demonstrates a reduction in potential impacts on the local heritage items on site, and within the immediate vicinity.

### Heritage-driven design

The concept master plan responds to the heritage architect's recommendation to anchor the project in heritage-driven design through:

- Respecting the prominence of the late Victorian upper gardens and buildings by providing curtilage and view lines to the Edina Manor and other features

- Reinstating the heritage concept of an upper and lower Victorian garden area
- Restoring the heritage gates on the corner of Bronte Road and Birrell Street and the functional connection between the upper and lower gardens
- Preserving and celebrating the heritage-listed buildings, including the Vickery's original manor house.

### Re-establishing gardens

The concept master plan supports positive heritage impacts to the Estate, by re-establishing spatial hierarchy of an upper and lower garden and replacing the concrete parking area with landscaped gardens at the heart of the site.

### Preserving heritage features

A focus will be the preservation and restoration of historical features, such as the heritage gates on the corner of Birrell Street and Bronte Road. Uniting will carefully consider the existing character of the Waverley neighbourhood, and our proposed new buildings aim to complement the existing and evolving streetscape.

For more information about the heritage aspects of this project, please call **1800 864 846** or visit **[uniting.org/waverley](https://uniting.org/waverley)**

## About Uniting

Uniting NSW.ACT is responsible for the social justice, community services and chaplaincy work of the Uniting Church in NSW and the ACT.

We provide care and support for people through all ages and stages of life, with a focus on people experiencing disadvantage and vulnerability.

Our purpose is to inspire people, enliven communities and confront injustice.

We value diversity and always welcome everyone, exactly as they are.

**Disclaimer:** All items contained within this fact sheet are principles and ideas. The design is at a proposed concept master plan stage to inform and support the community consultation and planning proposal. They are not final master plans or Development Application documents. The Development Application is subject to the statutory planning process. Illustrations are concepts only and subject to changes to satisfy statutory planning authorities.

Get in touch  
**1800 864 846**  
**ask@uniting.org**  
**uniting.org/waverley**

**Uniting**